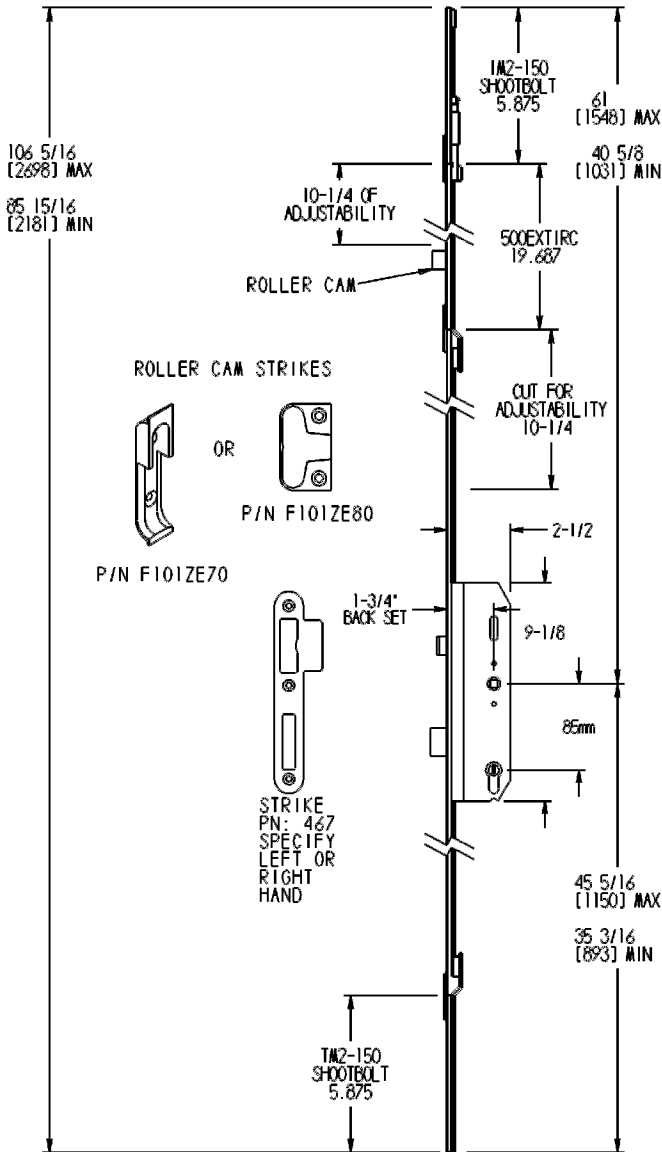
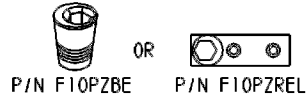


#7003; 3-Point Entrance Mortise Mechanism Stainless Steel With Roller Cams

EXAMPLE OF 7003 MULTI-POINT ENTRANCE LOCK
WITH ADD-ON ROLLER CAM EXTENSION.
(500EXTIRC)



SHOOTBOLT STRIKE



* ALL DADOE GROOVES MUST BE FREE OF ANY PARTICULATE OR SAWDUST BEFORE AND AFTER INSTALLATION.

*Four locking points consisting of latch, deadbolt top and bottom shootbolts and roller cam.

*Use for active door or window.

*Material: Stainless Steel.

Function: to lock:

*Lifting the lever up engages deadbolt, roller cam and shootbolts. Turning the cylinder locks all points into place.

To unlock:

*Turn cylinder to unlock all points. Pushing the lever down will disengage roller cam, deadbolt and shootbolts. Note latch functions in unlocked position.

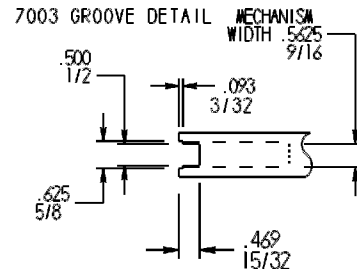
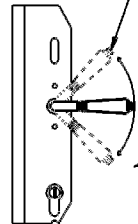
* 1 3/4" (45mm) Backset


Faceplate:

* 5/8" (16mm) width

*Minimum height door: 85 15/16 [2181].
Maximum height door: 106 5/16 [2698].
w/o add-ons.

Extensions available for taller doors.
For 10' doors add two (2) 19 11/16 [500mm] extension with (500 EXTIRC) or without (500 EXT1).
For doors taller than 10 feet simply add more extensions.





AMERICAN CYLINDER ADAPTER
PART #7000ACA
CONVERT PROFILE CYLINDER MECHANISMS TO ACCEPT AMERICAN TYPE KEY CYLINDERS HAVING FLAT TAB CYLINDER TAILS.
\$25
(SEE PAGE 153)

Other Hardware Manufacturers Trims that will fit:
Baldwin Door Configuration #D02
Emtek Door Configuration #1