

System "Easy Slide"

#6134 3-Point Locking Sliding Door Mortise Mechanism

Features:

- 3-Point Locking
- Using extensions, mechanism will accommodate any height sliding door.
- Many styles & finishes to choose from.
- Will fit 1-3/4" to 2-1/4" thick doors.
- 96" stock length. Cut with metal saw to adjust height.
- 2" backset.

To Lock:

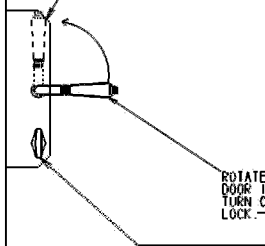
With lever handle in vertical position, (pointing up), slide door closed. Rotate lever down in horizontal position. This will engage all 3 locking points. Rotate cylinder thumb turn to lock all points into place.

To Unlock:

Rotate cylinder thumb turn cylinder back to unlock points. Rotate lever handle to the vertical position. This will disengage all locking points. Use the lever in the vertical position as a door pull to slide the door open.



ROTATE LEVER UP. DOOR CAN BE OPENED.
USE LEVER AS A DOOR PULL.



ROTATE LEVER DOWN WHEN
DOOR IS CLOSED.
TURN CYLINDER TO
LOCK.



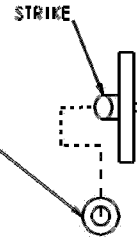
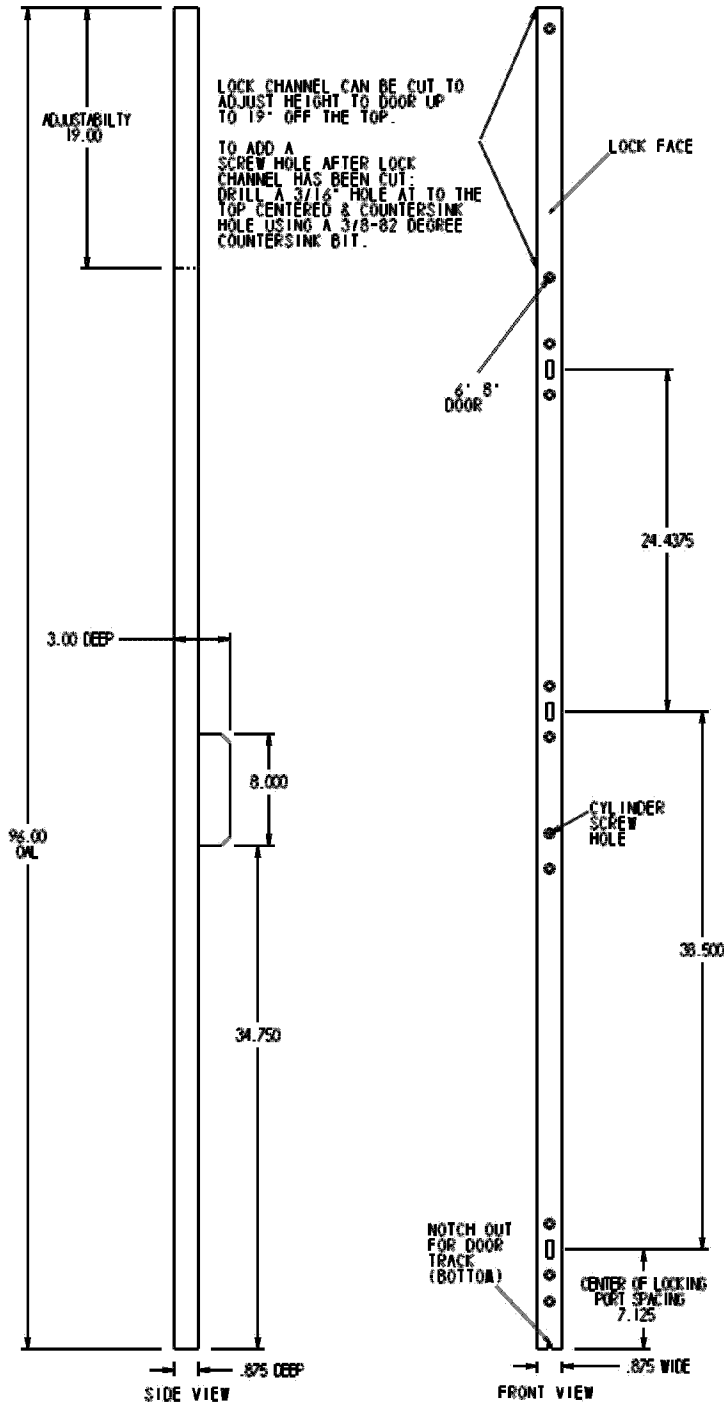
DESCRIPTION	PART NUMBER
MECHANISM, 2" BACK SET	6134-50
STRIKE	6134-SK
SCREW, MECHANISM OR STRIKE	0483-6134

System "Easy Slide"

#6134 3-Point Locking Sliding Door Mortise Mechanism

THE FPL EASY SLIDE SYSTEM
WITH 3 POINT LOCKING (#6134-50)
MILLING DETAIL & INSTALLATION INSTRUCTIONS

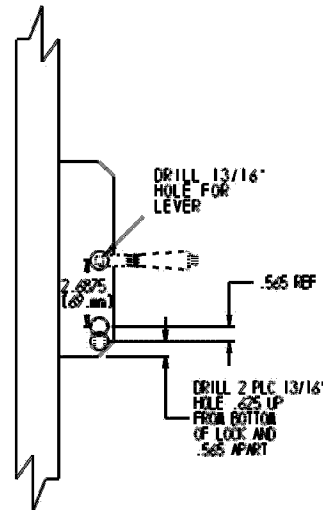
MILLING DETAILS



STRIKE PLACEMENT:
AFTER DOOR IS INSTALLED, PLACE 2 PLASTIC WASHERS (INCLUDED) OVER EACH STRIKE. LOCK STRIKES INTO PLACE TURNING LEVER TO HORIZONTAL POSITION. MOVE STRIKES TO THE CENTER OF EACH PORT. GENTLY SLIDE DOOR TO JAMB OR INACTIVE DOOR. STRIKES WILL MAKE AN INDENTATION WHERE THE STRIKES ARE TO BE INSTALLED. DISCARD PLASTIC WASHERS.

STRIKE PART# 6134-SK

DRILL DETAILS FOR LEVER & CYLINDER CLEARANCE.



LOCK OPERATION

