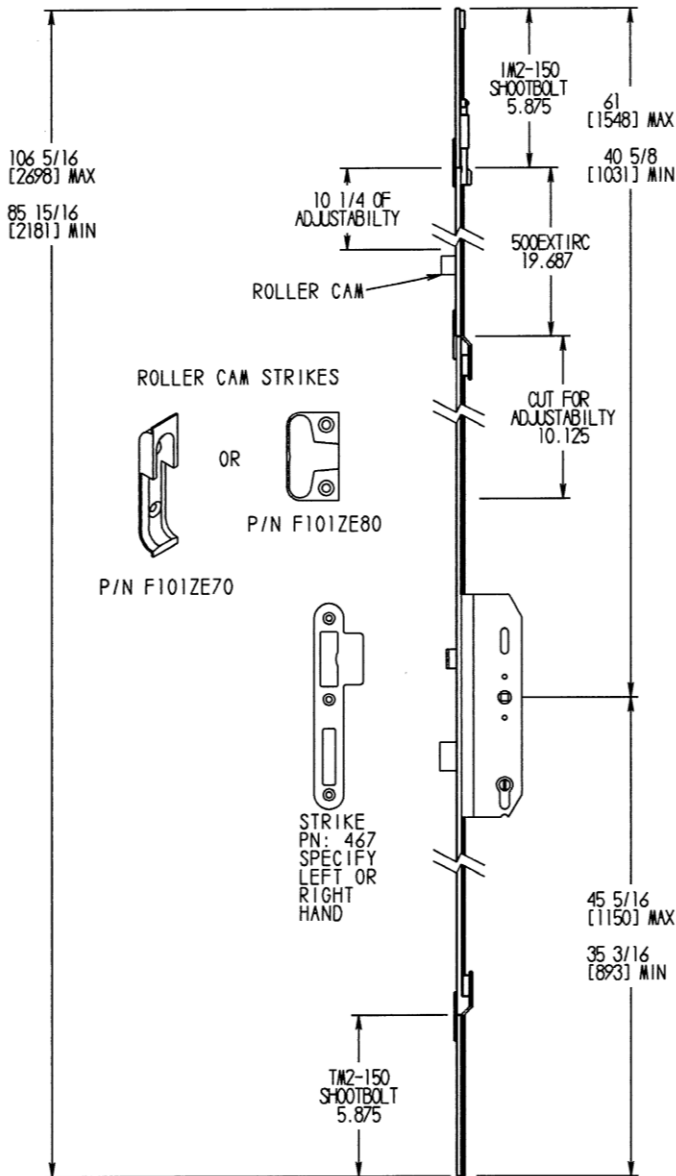


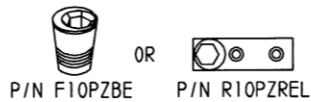
#7003; 3 Point Stainless Steel Entrance Lock

Shown With Add-On Roller Cam Extension (500EXTIRC)

EXAMPLE OF 7003 MULTI-POINT ENTRANCE LOCK WITH ADD-ON ROLLER CAM EXTENSION. (500EXTIRC)



SHOOTBOLT STRIKE



* ALL DADDO GROOVES MUST BE FREE OF ANY PARTICULATE OR SAWDUST BEFORE AND AFTER INSTALLATION.

*Four locking points consisting of latch, deadbolt top and bottom shootbolts and roller cam.

*Use for active door or window.

*Material: Stainless Steel.

Function: to lock:

*Lifting the lever up engages deadbolt, roller cam and shootbolts. Turning the cylinder locks all points into place.

To unlock:

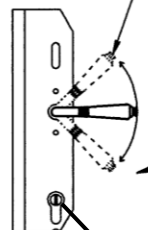
*Turn cylinder to unlock all points. Pushing the lever down will disengage roller cam, deadbolt and shootbolts. Note latch functions in unlocked position.

* 1 3/4" (45. mm) Backset

Faceplate:

* 5/8" (16. mm) width

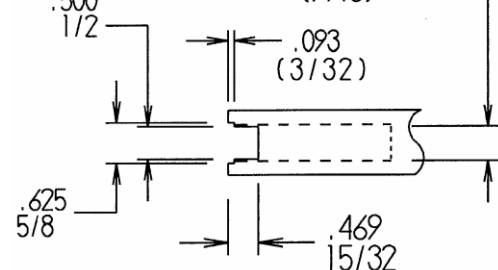
*Minimum height door: 85 15/16 [2181].
 Maximum height door: 106 5/16 [2698].
 w/o add-ons.
 Extensions available for taller doors.
 For 10' doors add two (2) 19 11/16 [500. mm] extension with (500 EXTIRC) or without (500 EXT1).
 For doors taller than 10 feet, simply add more extensions.



7003 Groove Detail

7003 GROOVE
DETAIL ONLY.

MECHANISM
WIDTH .5625
(9/16)



American Style Cylinder Adapter.
 Removable for Profile Cylinders.
 Part Number 700S ACA
 List Price \$15.00

