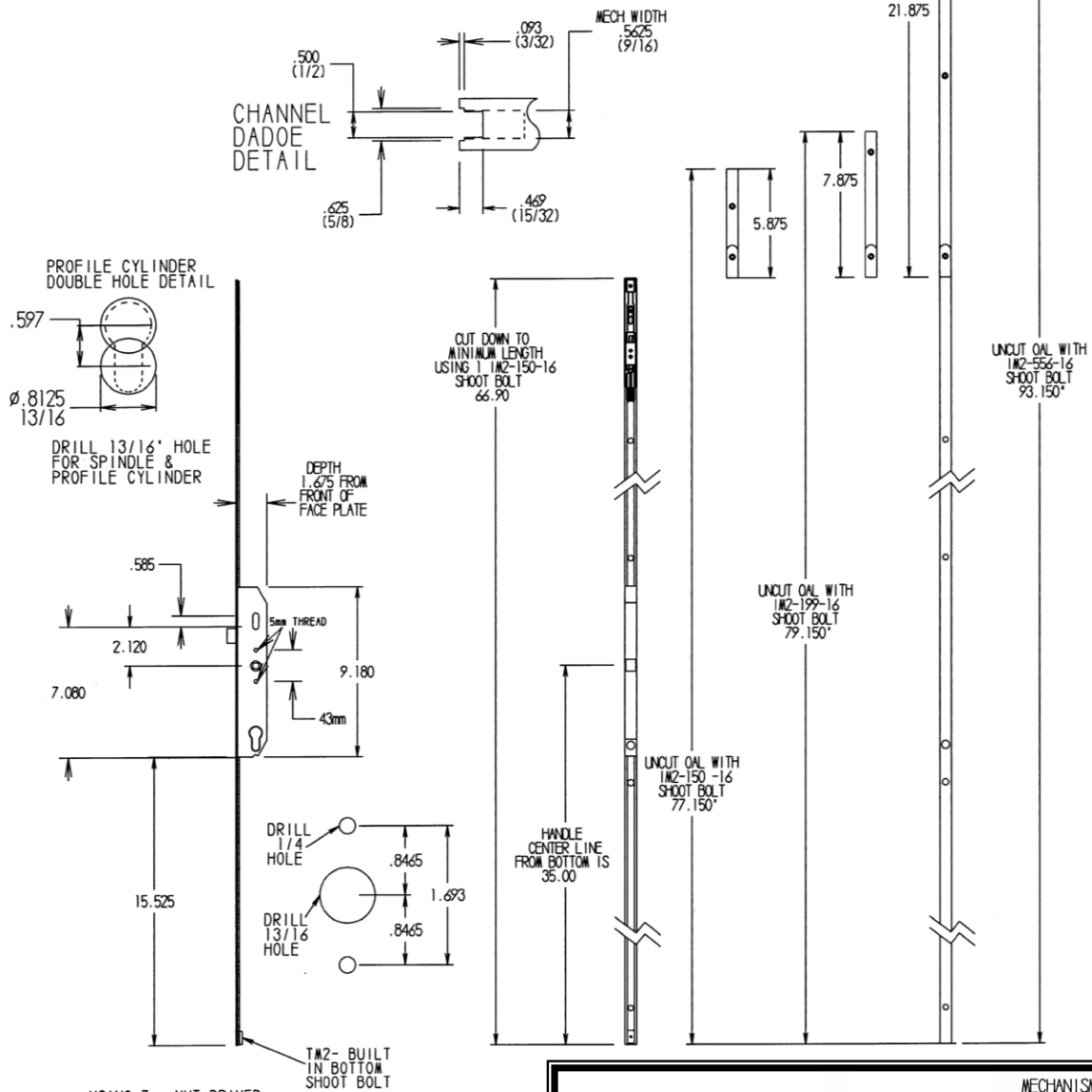


# System 4500

**ALL DADOE SLOTS MUST BE FREE OF PARTICULATE AND SAWDUST BEFORE AND AFTER INSTALLATION!**

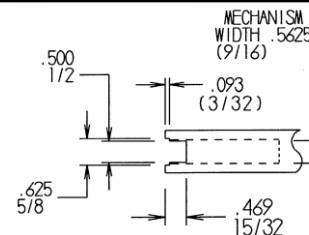


USING 7mm NUT DRIVER TIGHTENING NUT MAKES OPPOSITE END EXPAND INTO LEVER HUB ON LOCK.

(FOR ONE SIDED LEVERS)

EXPANDING SPINDLE  
PN: B008F10453F

## System 4500 Groove Detail



**PAINT & FINISH WARNING:** ATTENTION HOMEOWNERS, PAINTERS AND INSTALLERS!!! If doors are to be painted, stained, varnished or finished – it is important to **remove the mechanism and all its components** before doing so to prevent any contact with the mechanism or its components. Paint, stain, varnish and other chemicals that come in contact with the mechanism or any of its components may cause malfunction or damage and thus voids all warranties. If claims are submitted where warranties have become void, service call and replacement merchandise charges will apply and advance payment will be required for replacement merchandise and before service is performed.